

050908

RECEIVED
LARAMIE COUNTY
CHEYENNE, WY.

CERTIFIED LAND CORNER RECORDATION

DESCRIPTION OF CORNER EVIDENCE FOUND, AND ORIGINAL RECORD (08 NOV) 9 AM 9 08

S.25 S.30
S.36 S.31
T.17N.
R.62W., R.61W.
6th P.M.

Found 5/8" rebar 0.1' deep on line with North edge of E-W Road & East edge of road North, 33' West of Power Line, 58' East of fence North.

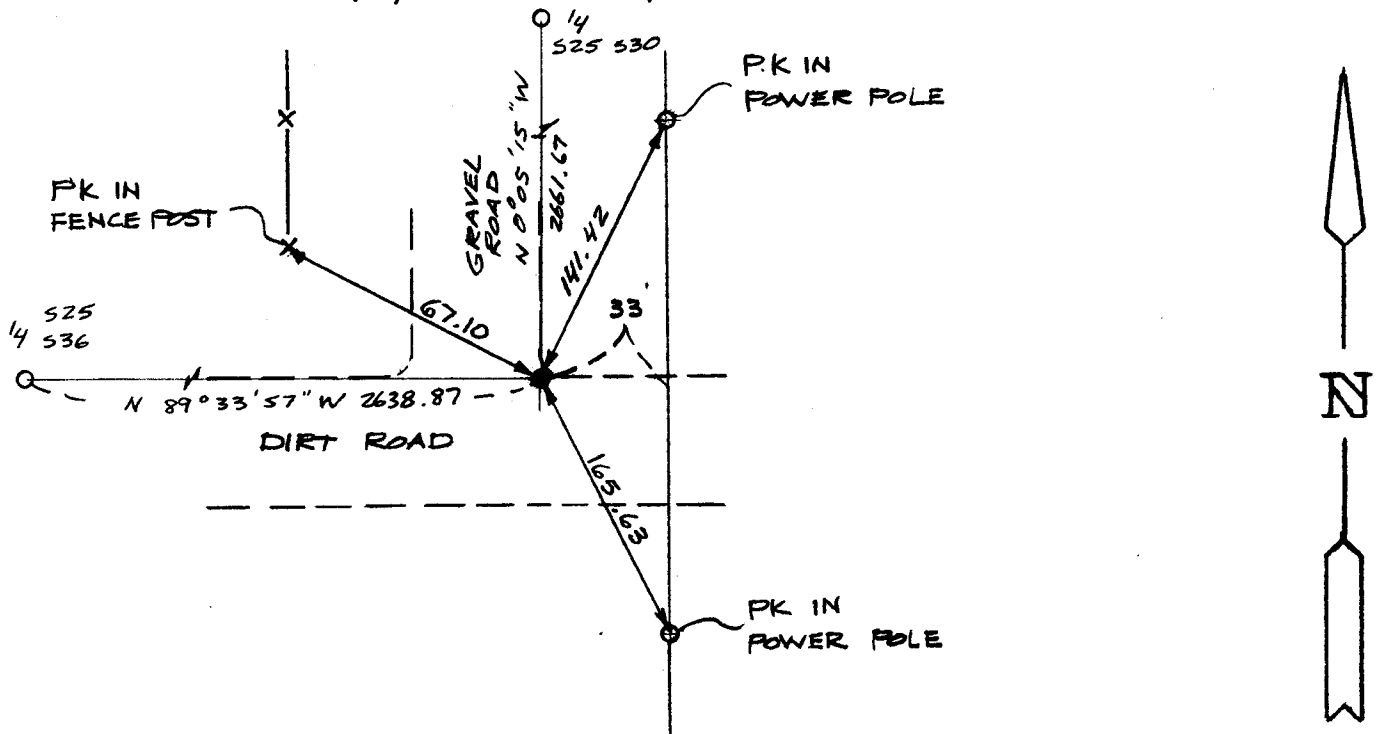
G.L.O. Record: Sandstone 20" x 12" x 8" 15" deep with one mark on the South and 5 on the North edge. Set by J. Wesley Hammond, Deputy Surveyor, June 12, 1873.

DESCRIPTION OF MONUMENT AND ACCESSORIES ESTABLISHED TO PERPETUATE THE ORIGINAL LOCATION OF THIS CORNER:

At the corner: Not remonumented.

Accessories : See ties below.

SKETCH, WITH COURSE AND DISTANCE TO ADJACENT CORNER IF DETERMINED IN THIS SURVEY. (May Sketch or Paste Reproduction on Reverse Side.)



I, John A. Steil certify that I have carefully performed or reviewed the work done on the diagrammed corner as reported on this recordation form and approve the same.

John A. Steil
Signature of Surveyor

L.S. 2500
Registration No.

STATE OF WYOMING,
Office of Clerk and Recorder,
County of _____

This "corner record" was filed for record on the _____ day of _____, 19____, was noted on the cross-index plat and is assigned page No. _____, in book No. _____.

County Official			
Cross Index No.	V-1	T. 17N	R. 61W Mer. 6th
	V-25	T. 17N	R. 62W Mer. 6th
		T. _____	R. _____ Mer.
		T. _____	R. _____ Mer.
		T. _____	R. _____ Mer.
		T. _____	R. _____ Mer.
		T. _____	R. _____ Mer.